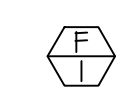




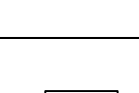
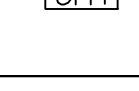


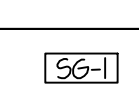


F:\0\043 STRATA AFFINHOUSES\TOWNHOMES M200.dwg Jan 30, 2018 - 12:53pm

| EQUIPMENT LIST                                                                      |                                                                                                                                                                                                                                                                                           |
|-------------------------------------------------------------------------------------|-------------------------------------------------------------------------------------------------------------------------------------------------------------------------------------------------------------------------------------------------------------------------------------------|
| SYMBOL                                                                              | DESCRIPTION                                                                                                                                                                                                                                                                               |
|  | DOWNFLOW GAS FIRED FURNACE - LENNOX MODEL EL145DF070F40B WITH 36,000 BTU COOLING CAPACITY, 66,000 BTU INPUT HEATING CAPACITY, 1200 CFM FLOW AT 0.6" EXTERNAL STATIC PRESSURE. UNIT TO BE FURNISHED WITH R410A DX COOLING COIL AND VERTICAL VENT TERMINATION ASSEMBLY. 120/60/1 AT 1/2 HP. |
|  | AIR COOLED CONDENSING UNIT - LENNOX MODEL 1BACX-36 WITH 0°F LOW AMBIENT HARD START KIT. UNIT TO BE R410A REFRIGERANT. UNIT TO BE 240/60/1 AT 21.9 MCA.                                                                                                                                    |
|  | CEILING MOUNTED EXHAUST FAN - AIRKING FRAS-10 (10 CFM) WITH 10x3 DISCHARGE DUCT WITH CEILING GRILLE BACK-DRAFT DAMPER AND SLOPED ROOF CAP.                                                                                                                                                |
|  | FLOOR REGISTER - ACCORD 10x6 STEEL ADJUSTABLE FLOOR REGISTER. PROVIDE BOOT FROM REGISTER THRU FLOOR WITH ROUND DUCT CONNECTION. REFER TO FLOOR PLANS FOR SIZE OF DUCT TO BE CONNECTED TO EACH REGISTER. PROVIDE DARK FINISH ON ALL FLOOR REGISTERS.                                       |
|  | LOW SIDEWALL SUPPLY REGISTER - ACCORD 8x6 STEEL ADJUSTABLE CEILING REGISTER. PROVIDE BOOT UP IN WALL TO REGISTER WITH ROUND DUCT CONNECTION AT BOTTOM. REFER TO FLOOR PLANS FOR SIZE OF DUCT TO BE CONNECTED TO EACH BOOT. PROVIDE WHITE FINISH ON ALL REGISTERS.                         |
|  | LOW SIDEWALL SUPPLY REGISTER - ACCORD 12x6 STEEL ADJUSTABLE REGISTER. PROVIDE BOOT UP IN WALL TO REGISTER WITH ROUND DUCT CONNECTION AT BOTTOM. REFER TO FLOOR PLANS FOR SIZE OF DUCT TO BE CONNECTED TO EACH BOOT. PROVIDE WHITE FINISH ON ALL REGISTERS.                                |
|  | CEILING SUPPLY REGISTER - ACCORD 12x6 STEEL ADJUSTABLE REGISTER. PROVIDE BOOT UP IN JOIST FROM REGISTER WITH ROUND DUCT CONNECTION. REFER TO FLOOR PLANS FOR SIZE OF DUCT TO BE CONNECTED TO EACH REGISTER. PROVIDE WHITE FINISH ON ALL REGISTERS.                                        |
|  | TRANSFER AIR GRILLE - ACCORD 10x4 GRILLE WITH WHITE FINISH. TO BE INSTALLED ABOVE DOOR HEADER.                                                                                                                                                                                            |
|  | RETURN GRILLE - ACCORD 36x10 GRILLE WITH WHITE FINISH. PROVIDE TRANSITION FROM GRILLE TO 20x10 RA DUCT IN MECH. RM.                                                                                                                                                                       |
|  | SOFFIT GRILLE - ACCORD 8x8 ALUMINUM SOFFIT GRILLE WITH FINISH TO MATCH SOFFIT COLOR.                                                                                                                                                                                                      |

- ### PLAN NOTES:
- RUN EXHAUST FAN DUCTWORK TO SOFFIT GRILLE OR WALL CAP. SEE SHEET M101 & M102 FOR ROUTING OF DUCTWORK FOR EACH TOWNHOME.
  - FIELD COORDINATE SPACE AVAILABLE FOR DUCTWORK. PROVIDE DUCT TRANSITIONS AS REQUIRED TO RUN DUCTS THRU STRUCTURE. UTILIZE JOIST SPACE WHERE POSSIBLE.
  - PROVIDE AND INSTALL DRYER WALL BOX IN WALL. DRYER BOX TO BE COMPLETE WITH 4" DUCT UP IN WALL TO SOFFIT GRILLE (SEE SHEET M102 FOR ROUTING). REFER TO DETAIL ON THIS SHEET FOR TYPICAL DRYER BOX INSTALLATION.
  - MOUNT PROGRAMMABLE THERMOSTAT ON WALL AND RUN 5 CONDUCTOR THERMOSTAT WIRE TO FURNACE.
  - INSTALL 4" OUTSIDE AIR DUCT FROM SOFFIT GRILLE AND CONNECT TO RETURN AIR DUCT. INSTALL HAND DAMPER IN 4" DUCT AND BALANCE TO 75 CFM.
  - RISE (2) 3" FURNACE FLUES UP THRU ROOF TO VERTICAL VENT TERMINATION ASSEMBLY. SEAL ROOF PENETRATION WEATHERTIGHT. SEE DETAIL ON THIS SHEET.
  - DROP REFR. PIPING DOWN IN WALL AND RUN TO ASSOCIATED CONDENSING UNIT AT GRADE LEVEL. SEE SHEET M101 FOR CONTINUATION OF REFR. PIPING.
  - SHEET METAL BOOT UP TO FLOOR GRILLE / LOW SIDEWALL GRILLE ABOVE.



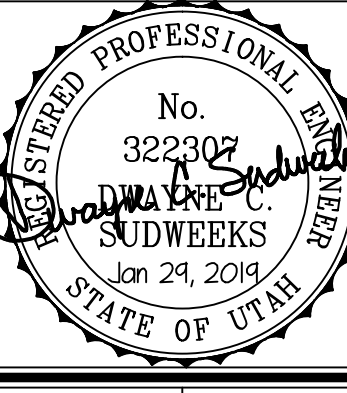
**Engineered Systems Associates  
Mechanical Engineers**

Dwayne Sudweeks  
1355 East Center - Pocatello, Idaho 83201  
Phone: (208) 233-0501 Fax: (208) 233-0529 email: esa@engsystems.com

**STRATA TOWNHOMES**  
LOGAN, UTAH

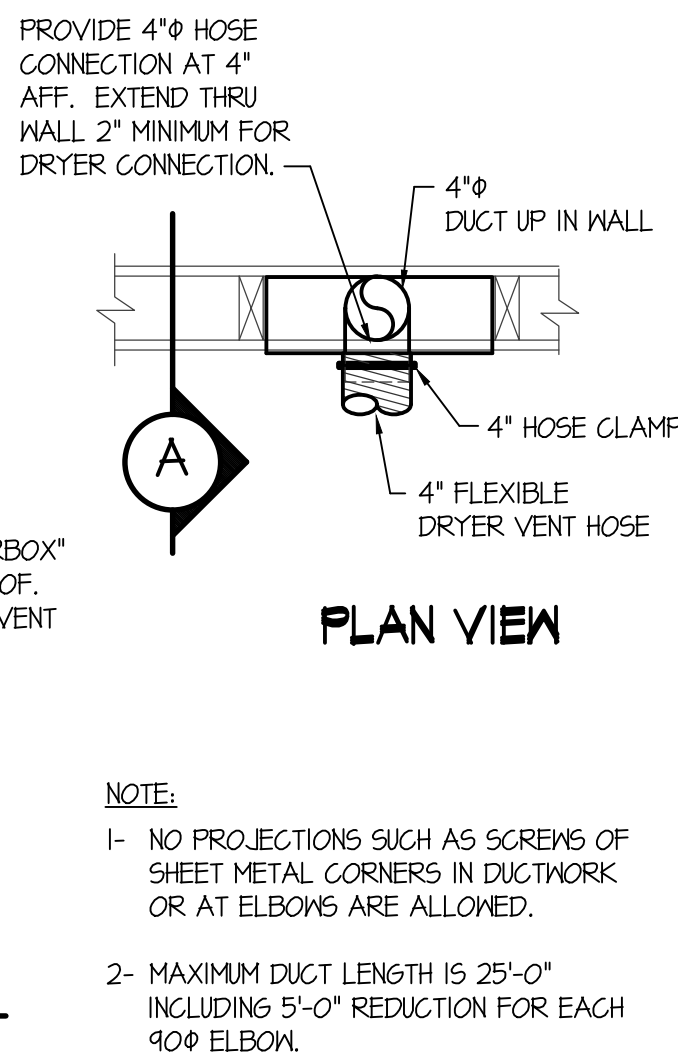
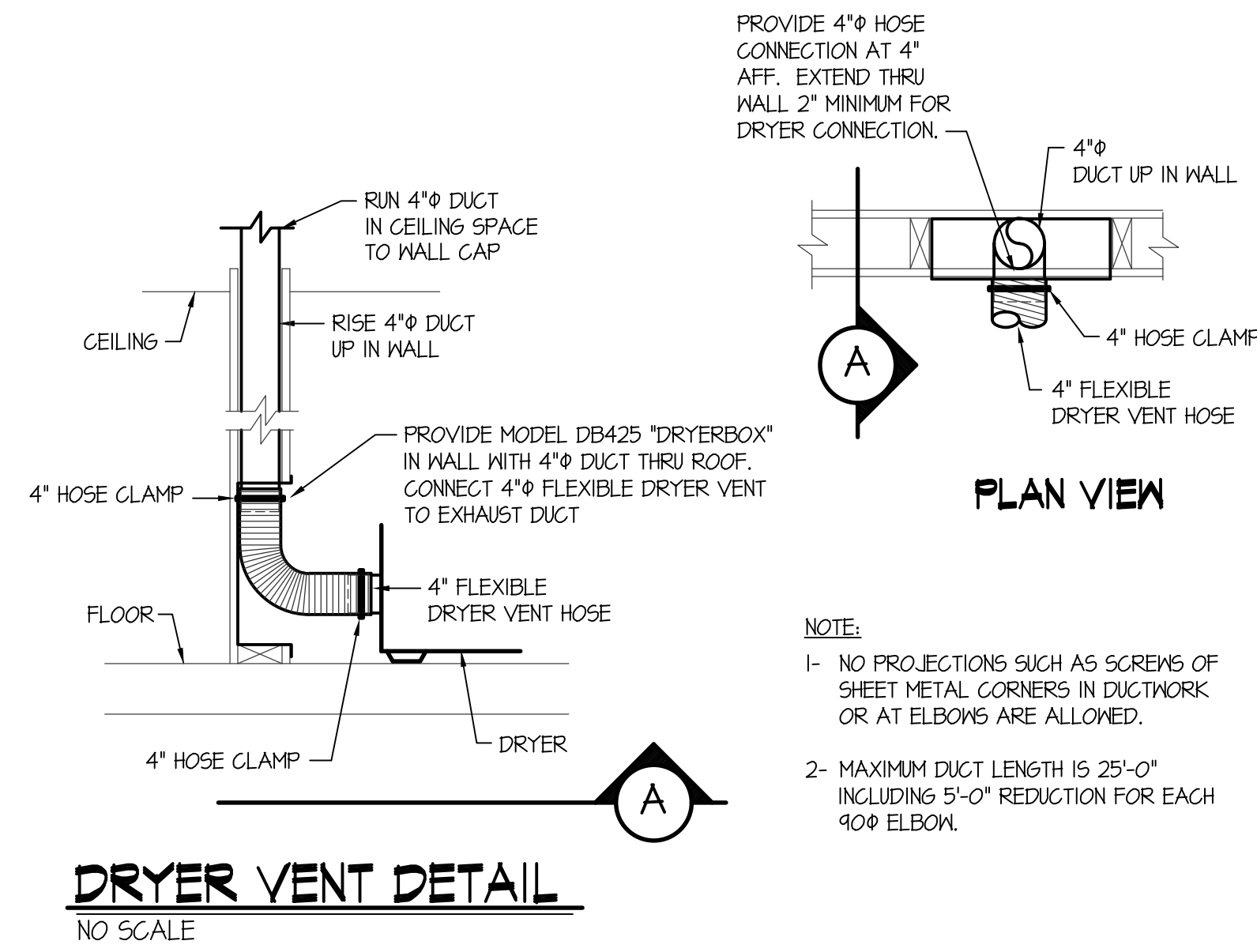
**UPPER LEVEL MECHANICAL PLANS**

PROJECT:  
SHEET TITLE:

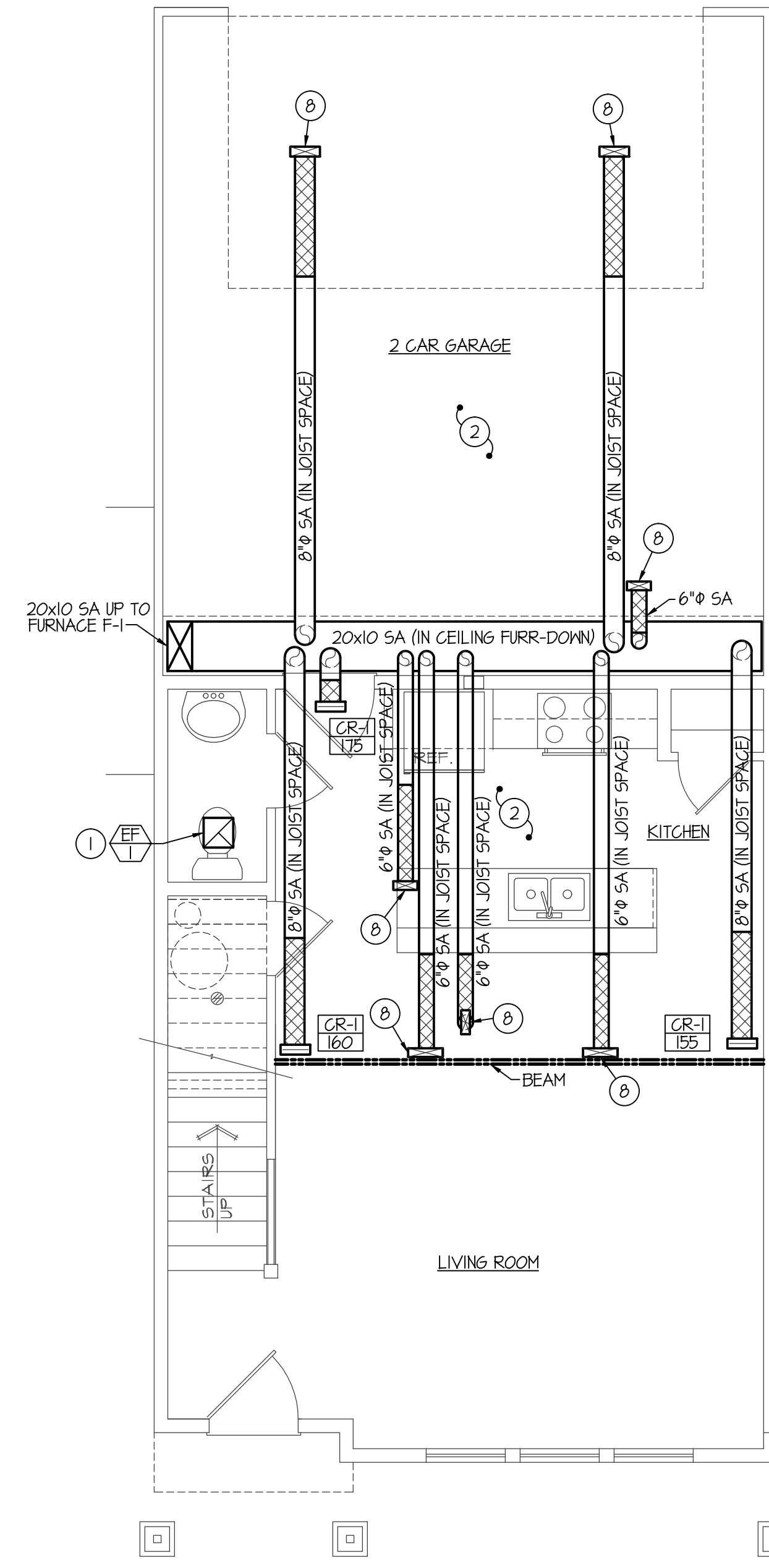
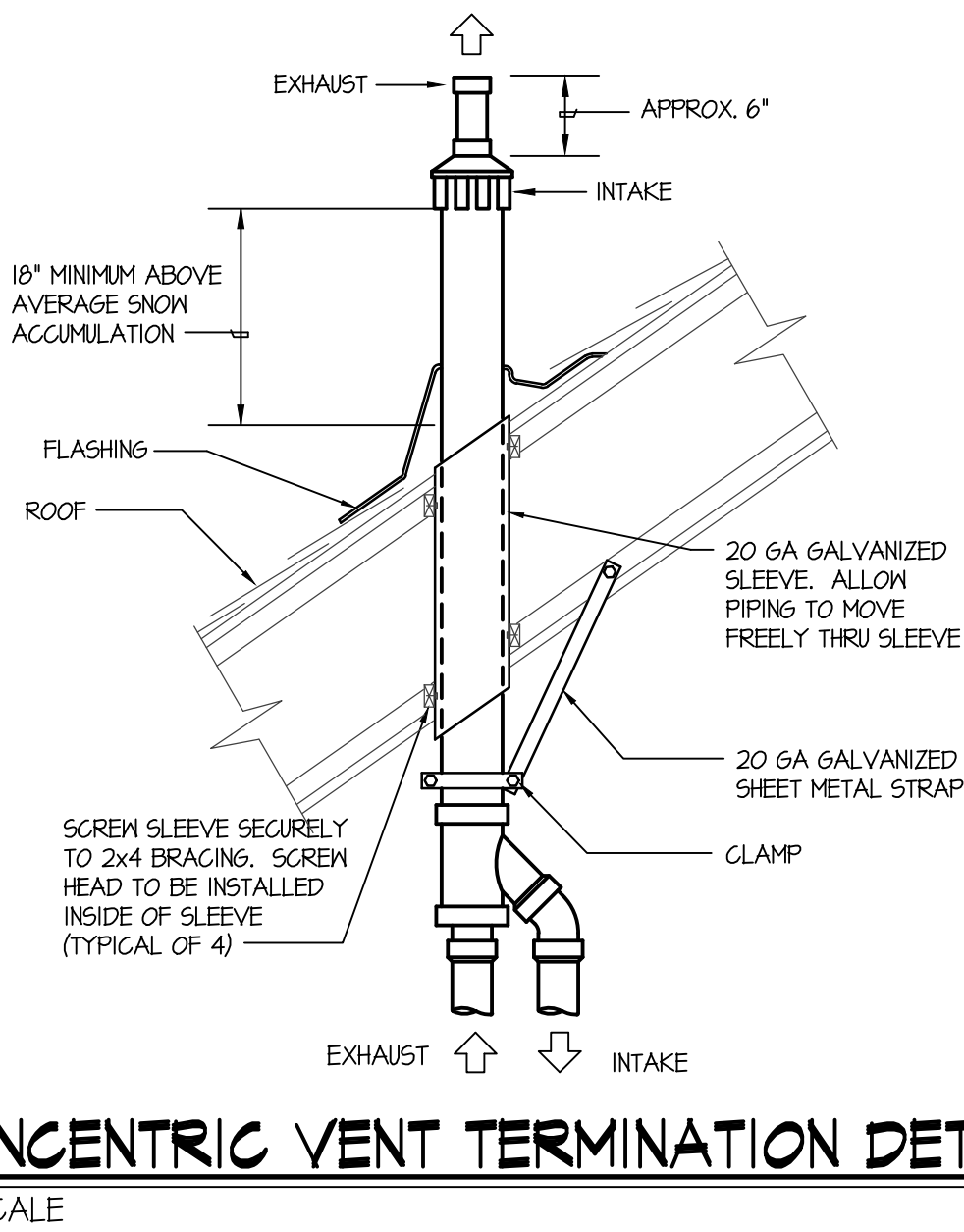
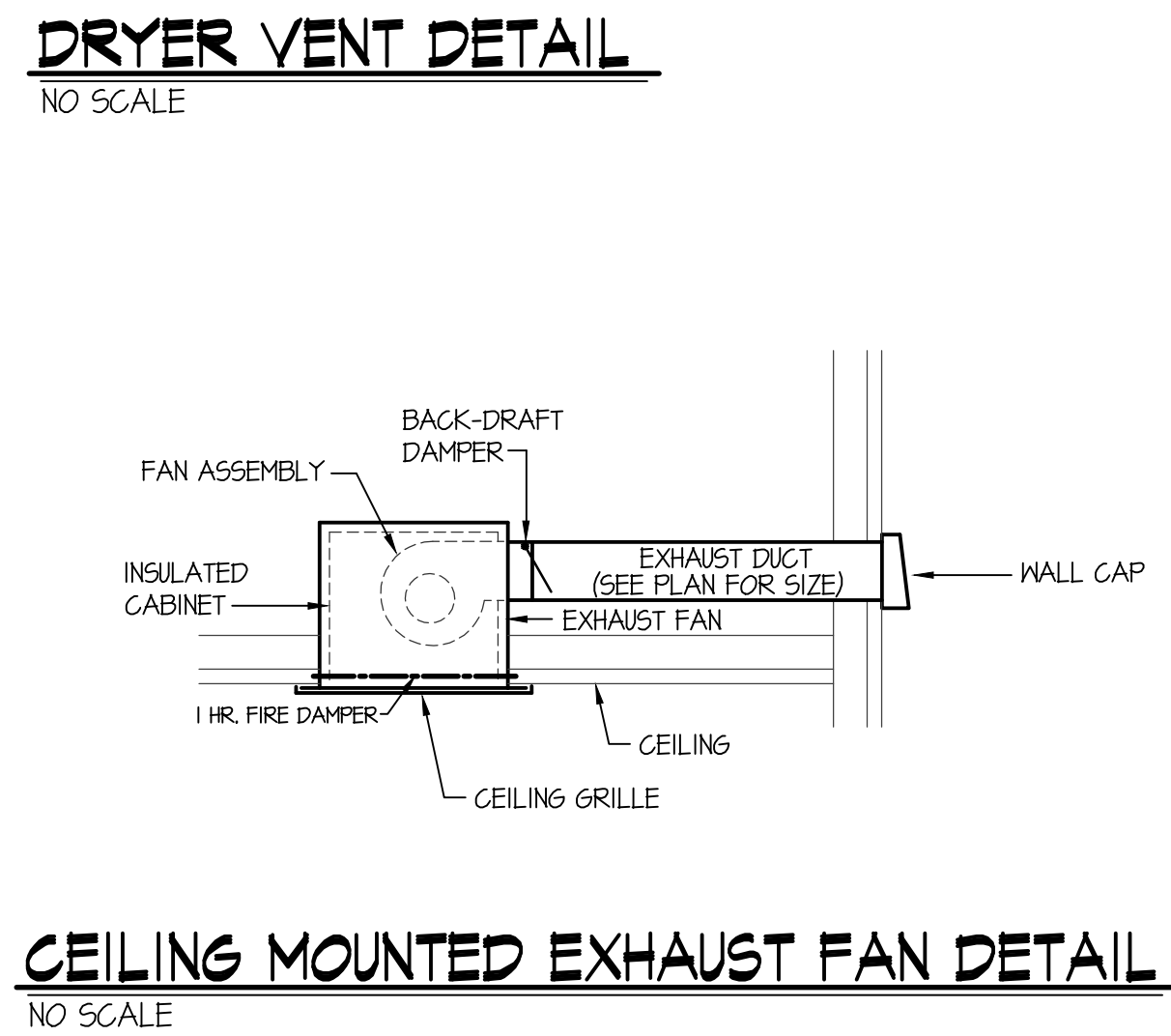


DRWN. BY: SR  
JOB NO: 18043  
CHK. BY: DCS  
DATE: DEC. 2018

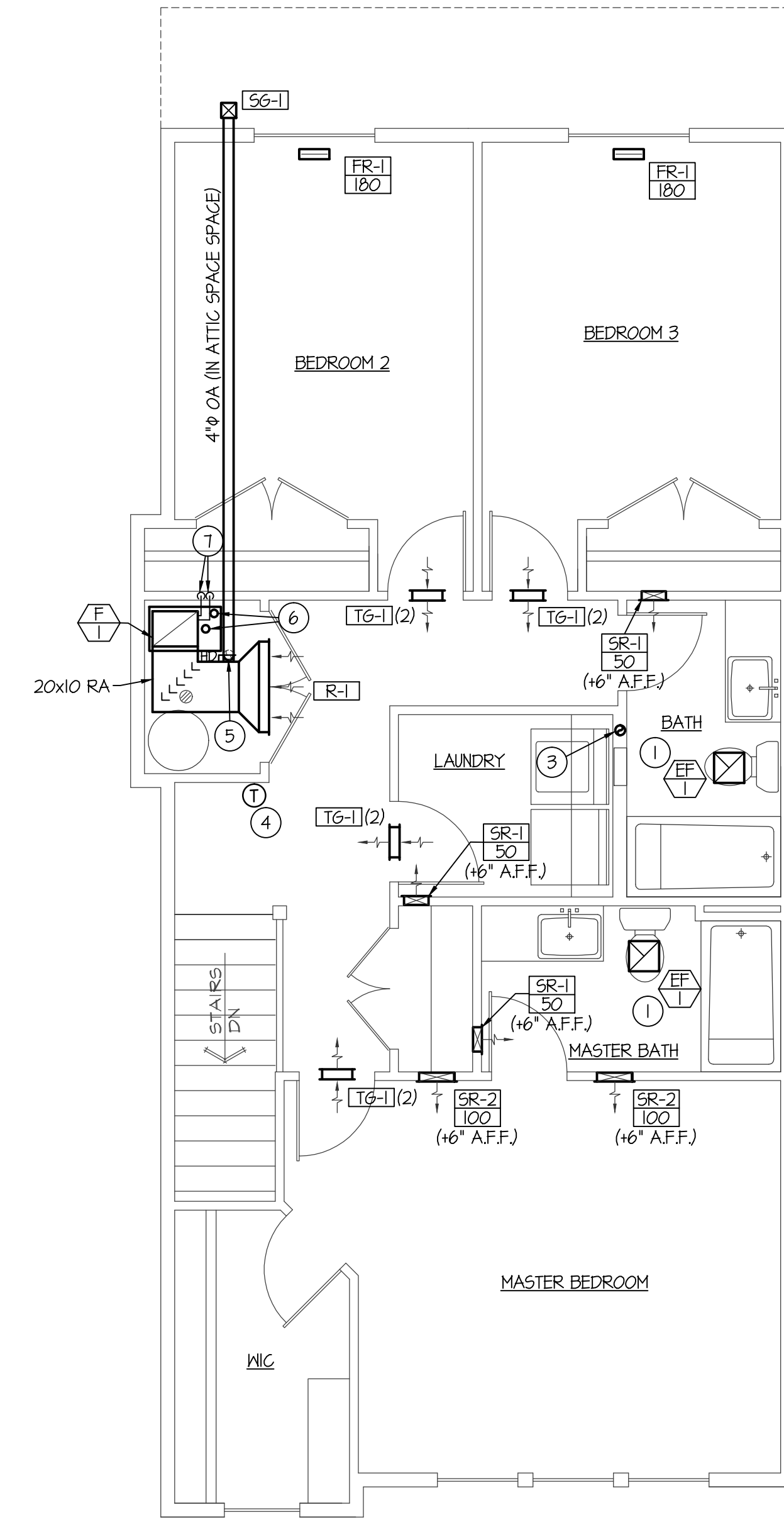
SHEET:  
**M200**  
OF: THREE



NOTE:  
1- NO PROJECTIONS SUCH AS SCREWS OR SHEET METAL CORNERS IN DUCTWORK OR AT ELBOWS ARE ALLOWED.  
2- MAXIMUM DUCT LENGTH IS 25'-0\"/>



TYPICAL TOWN HOME MAIN LEVEL MECHANICAL FLOOR PLAN  
SCALE: 1/4" = 1'-0"



TYPICAL TOWN HOME UPPER LEVEL MECHANICAL FLOOR PLAN  
SCALE: 1/4" = 1'-0"